

0mm

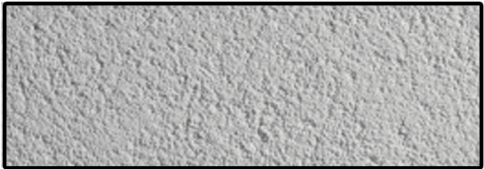
100mm

200mm

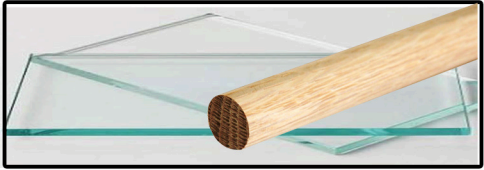
300mm

100mm

200mm



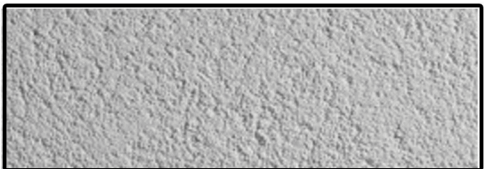
1. Trowel Smoothed Render: White



2. Clear Glass Balustrade with Timber Handrail



3. Aluminium full height sliding louvre. Powder coated - Bronze



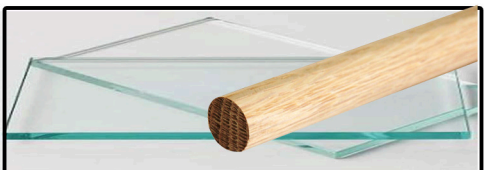
4. Trowel Smoothed Render: White



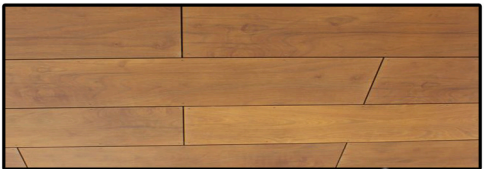
5. Aluminium full height louvre. Powder coated - White



6. Aluminium window frames. Powder coated- charcoal



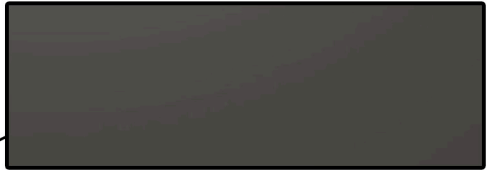
7. Clear Glass Balustrade with Timber Handrail



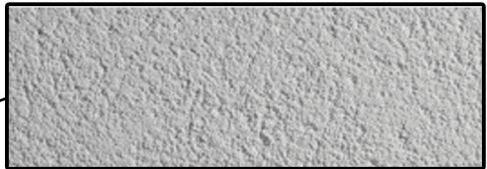
14. Balcony Soffit: Wooden Tile



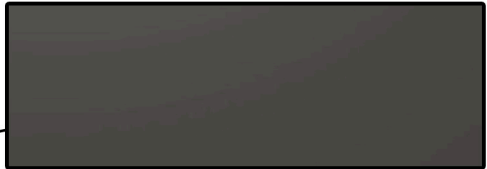
8. Corner Cladding: Green Ceramic Tile



9. Cladding Frame: Aluminium powder coated Warm Grey 2



10. Trowel Smoothed Render: White



11. Cladding Frame: Aluminium powder coated Warm Grey 2



12. Precast Concrete: Acid Etched texture. Colour - Warm Grey 1



13. Retaining Wall: Blue Stone Tile. 300mm x 600mm

1	18.03.16	DA ISSUE
rev	date	amendment

Project Title  
**588-592 PRINCES HIGHWAY**  
588 PRINCES HWY ROCKDALE NSW 2216  
AT LOT 1 IN DP 840863 & LOT 11 IN DP 590046

Copyright of the design and other information shown here is owned by Anthony Vavayis & Associates Architects Pty. Ltd. Reproduction or use of the design by any party for any purpose is expressly forbidden without the written permission of Anthony Vavayis & Associates Architects Pty. Ltd.

**ANTHONY VAVAYIS & ASSOCIATES**  
ARCHITECTS DESIGNERS PLANNERS  
24 LIME STREET KING STREET WHARF SYDNEY NSW 2000  
E: admin@avaarchitects.com.au T: 02 9290 1810 F: 02 9290 1860  
W: www.avaarchitects.com.au  
P: 20/26A LIME STREET, KING STREET WHARF, SYDNEY, NSW 2000  
ANTHONY VAVAYIS & ASSOCIATES PTY LTD. ACN 069 737 935  
NOMINATED ARCHITECT - ANTHONY VAVAYIS NO. 5243

Title:  
**MATERIALS**

Project no: **15041** Scale @ A3:

Date: 18 MAR 16

Drawing no: **DA 2000**

Rev: **1**